

Stagecoach F1 Service [Routes Revised for 2012]

Outbound Route - (from Silverstone)

During SCL INBOUND

- Inbound Bus Route from Abthorpe Cross roads
- High Street into Brackley Road to
- *Pick Up (& Drop Off) Passengers on Brackley Road*
- A43 Towcester Northbound via Dadford Road
- Requires management at Dadford Rd / Brackley Rd to avoid conflict with SCL Traffic

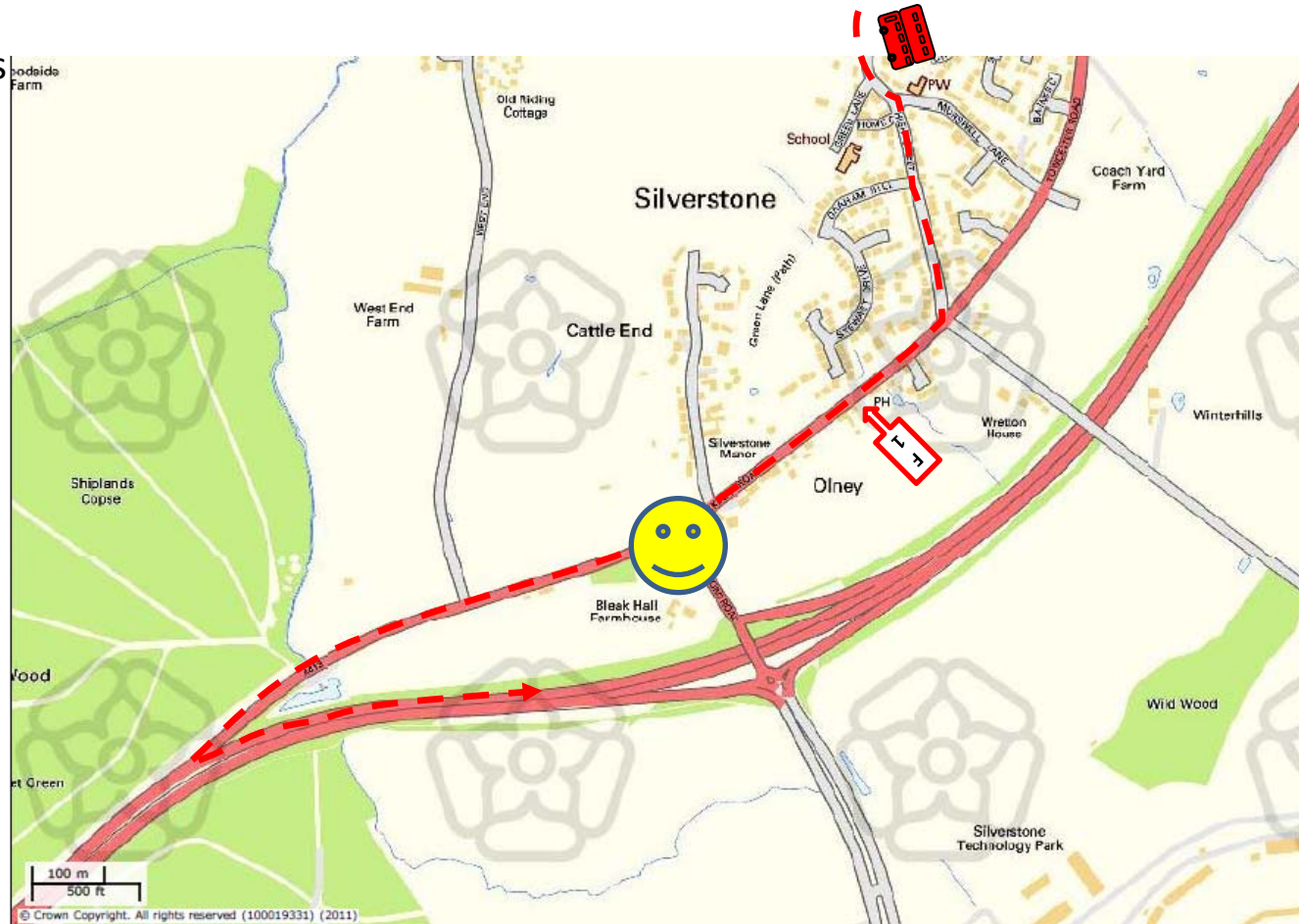


Stagecoach F1 Service [Routes Revised for 2012]

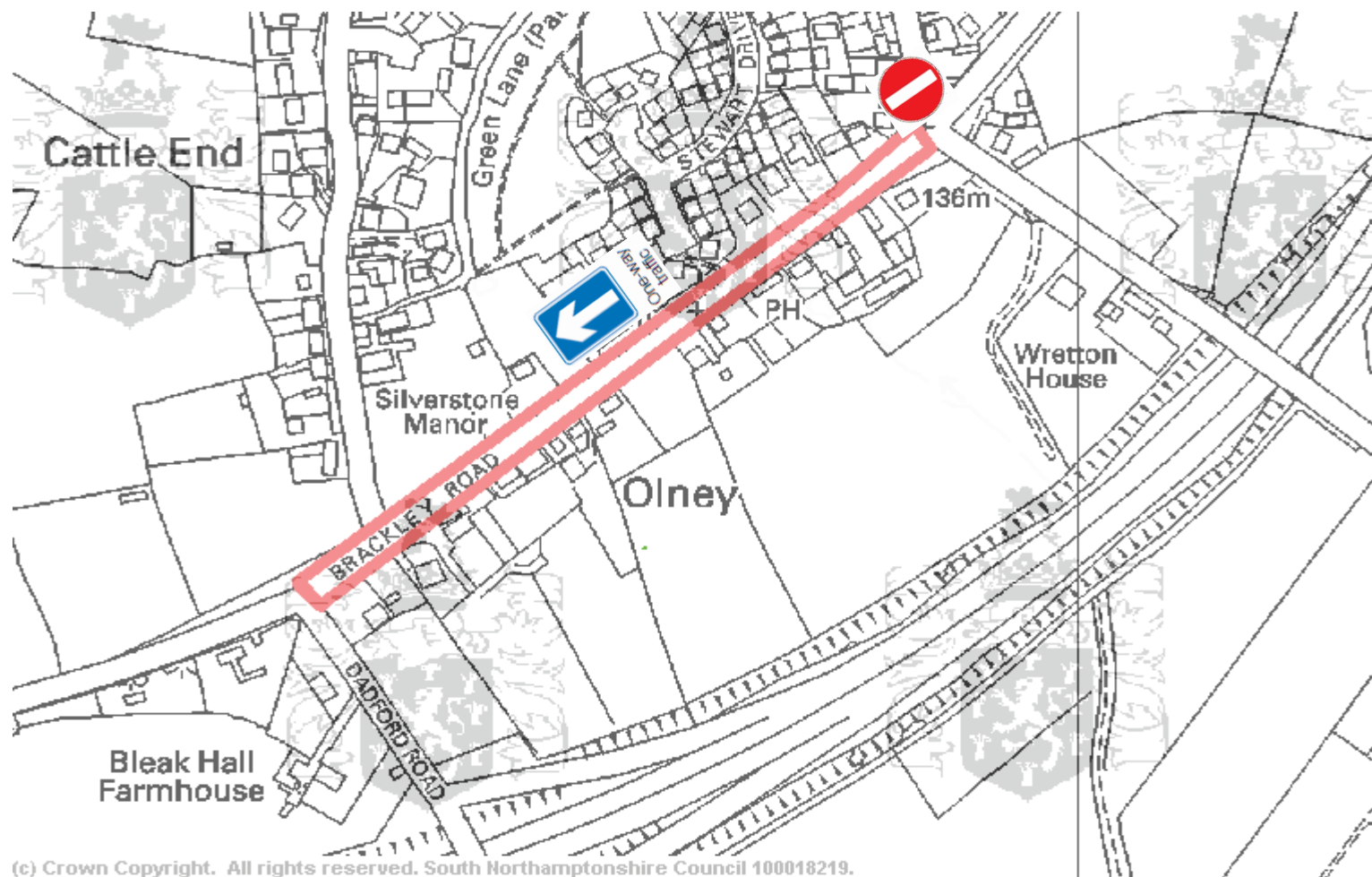
Outbound Route - (from Silverstone)

During SCL OUTBOUND

- Inbound Bus Route from Abthorpe Cross roads
- High Street into Brackley Road to
- *Pick Up (& Drop Off) Passengers on Brackley Road*
- A43 Towcester Northbound via (reversed) Off Slip (Brackley Road)
- Requires management at Dadford Rd / Brackley Rd to avoid conflict with SCL Traffic



**TAXI DROP-OFF AND PICK-UP LOCATION - FOR THE BRITISH GRAND PRIX
BRACKLEY ROAD, SILVERSTONE –
THIS IS THE ONLY AUTHORISED WAITING AREA FOR TAXIS & BUSES**



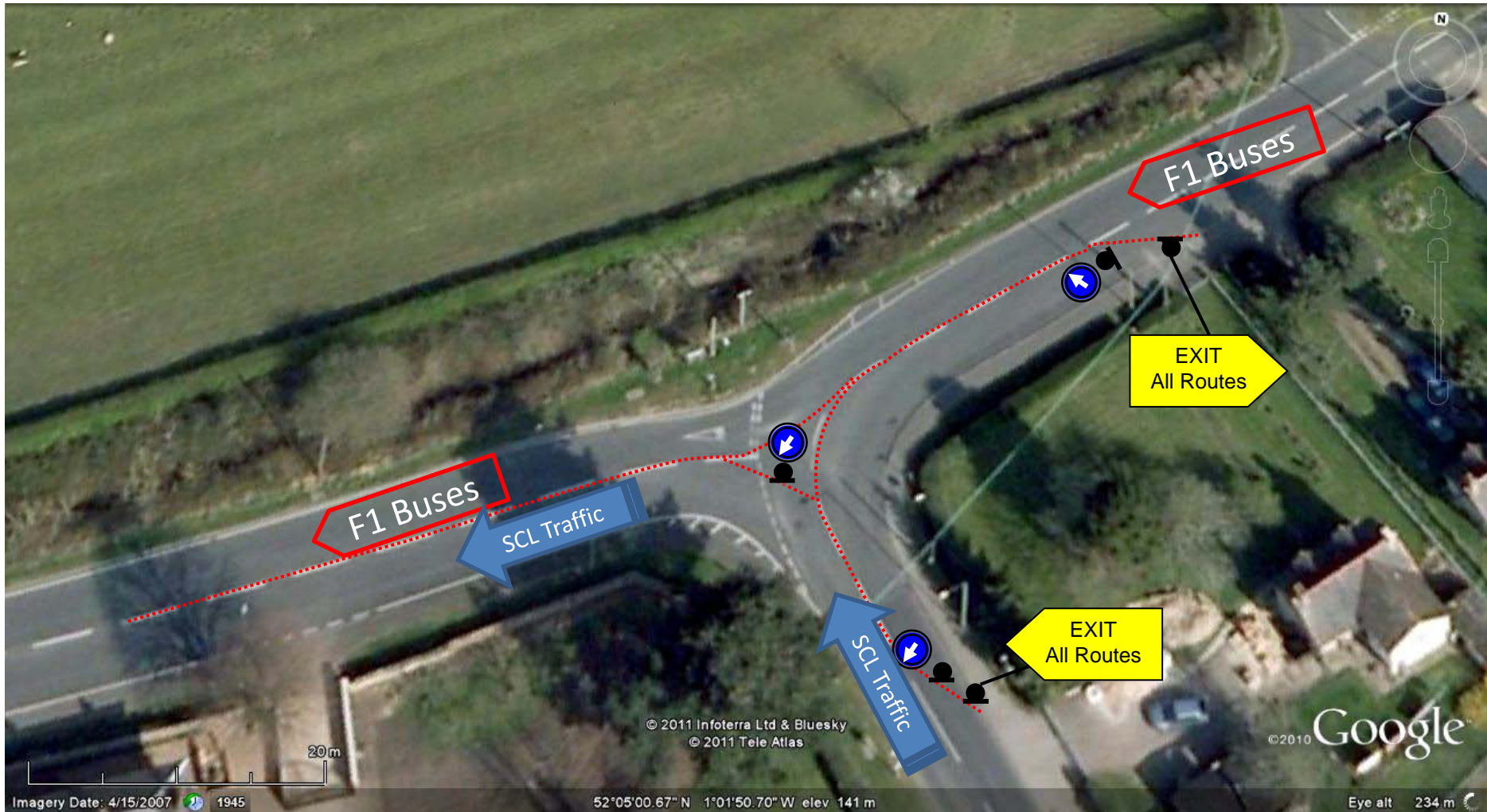
(c) Crown Copyright. All rights reserved. South Northamptonshire Council 100018219.

THERE IS A 30 MINUTE WAITING LIMIT WHICH WILL BE ENFORCED
NB: A ONE WAY SYSTEM [EAST TO WEST] and NO ENTRY INTO HIGH STREET (from BRACKLEY ROAD)
WILL OPERATE DURING BGP WEEKEND

Stagecoach F1 Service [Routes Revised for 2012]

Outbound Route - (from Silverstone)

During SCL OUTBOUND



Stagecoach F1 Service [Routes Revised for 2012] Outbound Route - (from Silverstone) During SCL OUTBOUND

